



UL/FM

Lifeco



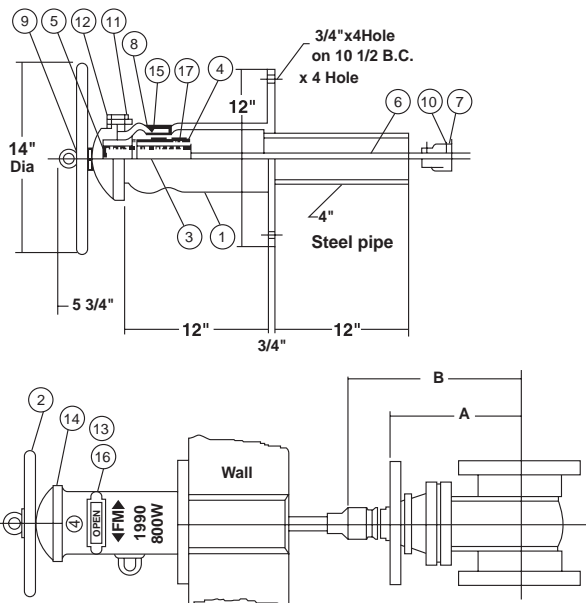
Wall Type Indicator Post 800-w

- Used for application where a valve is installed behind a wall.
- The wall flange of the wall type Indicator Post is tapped for 4" schedule 40 steel pipe (furnished by customer) which extends through the wall.
- Handwheel operation.

Dimensions Inches

Nominal Size	Dimensions in Inches		Extension Rod Length	Approx. Net. Wt. (Lbs)
	A	B		
4"	9.56	13.63	3'	90 (All Sizes)
6"	13.69	18.00	3'	
8"	16.60	21.00	3'	
10"	19.88	24.63	3'	
12"	23.50	28.25	3'	

No.	Part	Material	Specification
1	Body	Cast Iron	ASTM A126-B
2	Hand Wheel	Cast Iron	ASTM A126-B
3	Operating Stem	Cast Bronze	ASTM B-62
4	Target Frame	Cast Bronze	ASTM B-62
5	Retaining Ring	Steel	SAE 1065-1090
6	Extension Rod	Mild Steel	ASTM A105-80
7	Socket	Cast Iron	ASTM A126-B
8	Gasket	Rubber	Commercial
9	Washer	Steel	Commercial
10	Cotter Pin	Brass	ASTM B-16
11	Nut	Steel	ASTM A307-B
12	Bolt	Steel	ASTM A307-B
13	Sign Plate	Aluminum	Commercial
14	Cap	Cast Iron	ASTM A126-B
15	Window Frame	Pleiglass	Commercial
16	Window Frame	Cast Bronze	ASTM B-62
17	Fixed Plate	Steel	Commercial



Lichfield Fire & Safety
Equipment Co. Ltd

Suite 4, 2nd floor, Saturn Centre
Spring Road, Ettingshall
Wolverhampton WV4 6JX
United Kingdom.

Tel: +44 (0) 870 066 4401
Fax: +44 (0) 870 066 4402
E-Mail: info@lifeco-uk.com
Website: www.lifeco-uk.com

