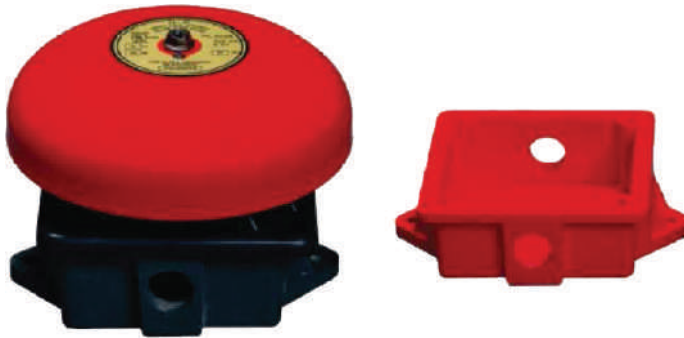


TECHNICAL DATA SHEET

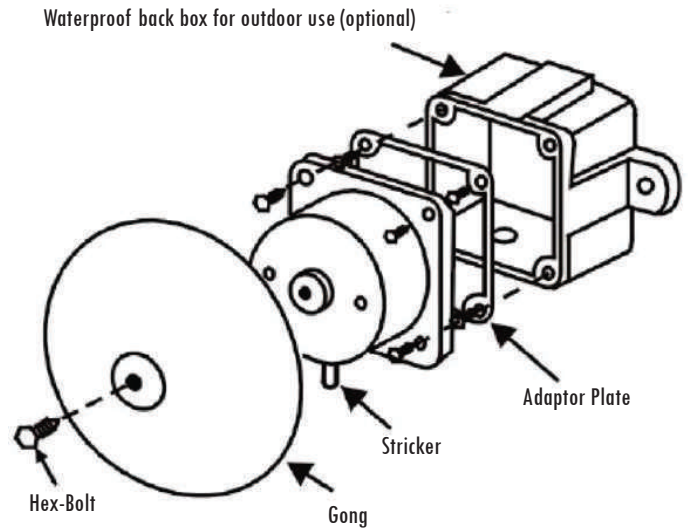
for use by Architects & Engineers

Fire Alarm Bell

Model No: LFB16/18/110



Exploded View



Features

- Microprocessor based design
- High dBA Sounds Output
- Low power consumption
- Available in 6", 8" 10" Housing
- Quickly and Easily installed

Installation Instruction

- Remove bell gong by loosening hex bolt.
- Wire bell in circuit.(Notice Polarity)
- Mount bell mechanism on 4" square standard outlet box with the striker facing down.
- Replace the gong and tighten hex bolt.
- The bell must be mounted a minimum of 8ft above the floor, or as close to the ceiling as possible.
- Polarized bell provides Red(-) and Black(-) lead wires. When you install the bell, must observe the polarity.

Technical & Environmental Specification

	LFB16	LFB18	LFB110
Gong size	16"	18"	10"
Voltage	24VDC	24VDC	24VDC
Current	20mA	20mA	20mA
Sound level	95dB@10ft	83dB@10ft	85dB@10ft

Dimension Details

