

Fire Doors



LIFECO's fire rated doors are designed for areas where strength, stability and durability are a priority. Typical application includes Commercial, Residential, Institutional, Industrial and mercantile buildings service door, basements, stair wells and elevator shafts.

LIFECO Fire doors and frames are getting manufactured and tested according to UL10 B , UL 10 C, UL1784 and Conforming to NFPA 80, NFPA 252, NFPA 105 and CAN - ULC S104 which can achieve a re protection rating requirements upto 3 hours.

LIFECO's Fire protection rated doors can be classified broadly into the following three categories :

- 1) Temperature Rise Doors
- 2) Air Leakage Door & Temperature Rise Doors
- 3) Non Temperature Rise Doors

Non Temperature Rise

Single Leaf Door



Fire Protection Rating Up to 1,2 & 3 Hours
Core Type - Honey Comb
Max.Frame Size (w x h) - 1326 x 3000mm
Max. Door Size (w x h) - 1220 x 2934mm
Type of Opening - Single Swinging Door

- Doors can be used in dry wall and masonry construction.
- LIFECO Fire doors are available in Cold Rolled Steel, Galvanized steel, Hot Dipped Electro galvanized or Galvalume material.
- Door leaf thickness: 45 mm
- Material thickness (Gauges):1.2mm (18 gauge)
- Painting: Prime painted materials can be used for hot rolled or cold rolled steel sheet.
- High aesthetics and robust structure
- Easy to install on a Masonry wall opening & dry walls.
- Factory finished for primer and paint finishes.
- Conforming to highest quality standards
- Temperature Rise Door ratings available upon request
- Air Leakage Doors available upon request

Fire protection ratings are subject to the nature of order.

Ceramic fiber / Fiberglass insulations are available upon request.

Non Temperature Rise

Double Leaf Door



Fire Protection Rating Up to 1,2 & 3 Hours

Core Type - Honey Comb

Max.Frame Size (w x h) - 1326 x 3000mm

Max. Door Size (w x h) - 1220 x 2934mm

Type of Opening - Single Swinging Door

- Doors can be used in dry wall and masonry construction.
- LIFECO Fire doors are available in Cold Rolled Steel, Galvanized steel, Hot Dipped Electro galvanized or Galvalume material.
- Door leaf thickness: 45 mm
- Material thickness (Gauges): 1.2mm (18 gauge)
- Painting: Prime painted materials can be used for hot rolled or cold rolled steel sheet.
- High aesthetics and robust structure
- Easy to install on a Masonry wall opening & dry walls.
- Factory finished for primer and paint finishes.
- Conforming to highest quality standards
- Temperature Rise Door ratings available upon request
- Air Leakage Doors available upon request

Fire protection ratings are subject to the nature of order.

Ceramic fiber / Fiberglass insulations are available upon request.

Order Form : Single Leaf Door - Specs and Features

Client Name : _____
 Contact Details : _____

HOURLY RATING

1 Hr 2 Hr 3 Hr

DIMENSIONS

Frame Depth, D = _____
 Frame Overall Width, W = _____
 Frame Overall Height, H = _____

COLOR REQUIRED

Red Beige Grey

Others : _____

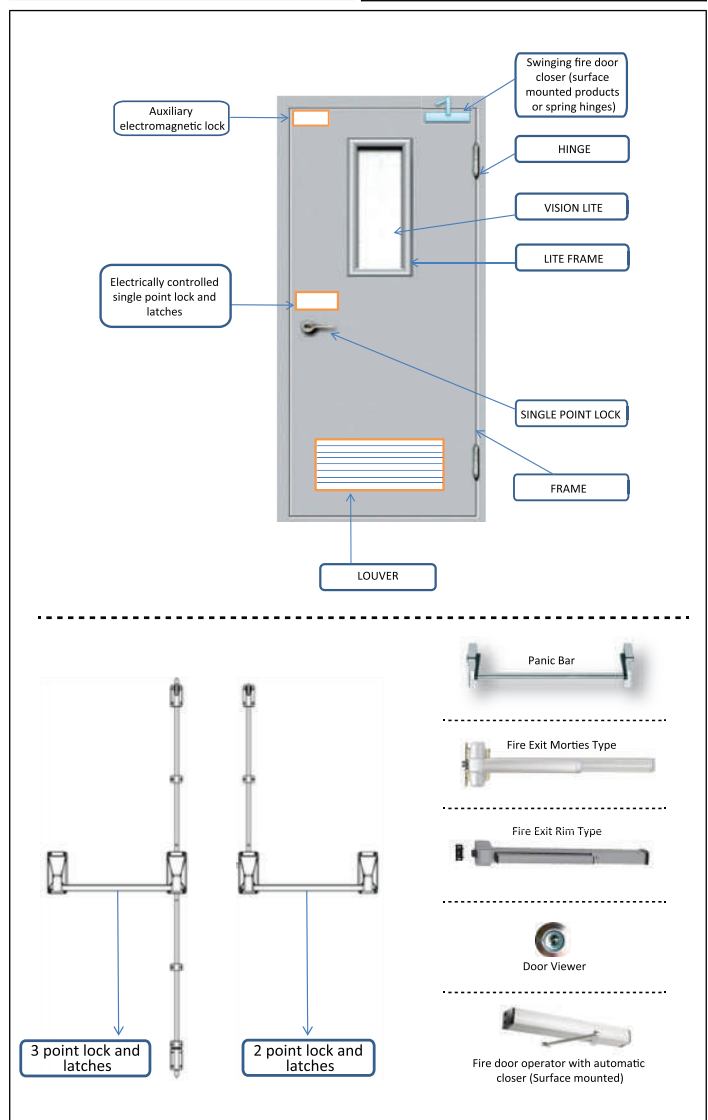
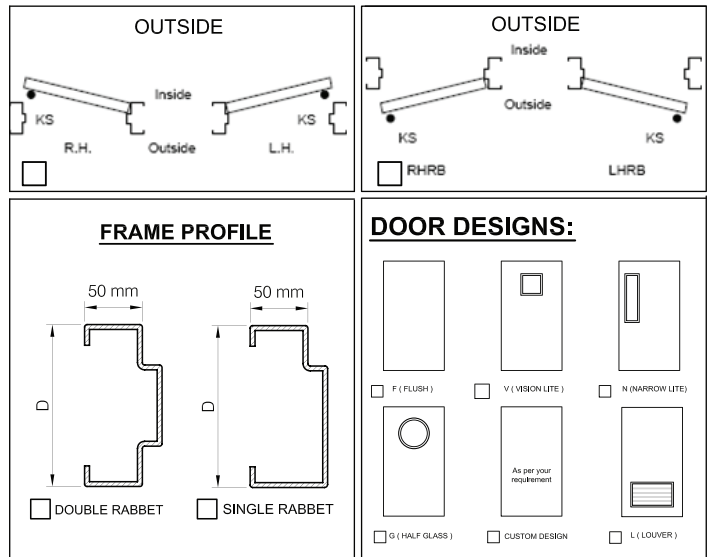
QUANTITY : _____

STANDARD FEATURES

1. Door Leaf thickness = 45mm
2. CRS/Galvanized sheet
 - a. Sheet thickness of door = 1.2 mm
 - b. Sheet thickness of frame (Non Rated) = 1.5 mm
 - c. Sheet thickness of frame (Fire Rated) = 2.0 mm
 - d. Powder Coated Paint

HARDWARE

- Single Point Lock and latches – Mortise Type
- Two and three Point Lock and latches – Mortise Type (Surface mounted)
- Electrically controlled single point lock and latches
- Auxiliary electromagnetic lock
- Fire Exit Rim Type
- Fire Exit Mortise Type
- Panic hardware
- Hinges
- Louvers (Applicable for ceramic fiber only)
- Vision lite
- Swinging fire door closer (surface mounted products or spring hinges)
- Fire door operator with automatic closer (Surface mounted)
- Combination fire door closer and holders (Surface mounted)
- Fire door operator
- Door viewer



Order Form : Double Leaf Door - Specs and Features

Client Name : _____
 Contact Details : _____

HOURLY RATING

1 Hr 2 Hr 3 Hr

DIMENSIONS

Frame Depth, D = _____
 Frame Overall Width, W = _____
 Frame Overall Height, H = _____

COLOR REQUIRED

Red Beige Grey

Others : _____

QUANTITY : _____

STANDARD FEATURES

1. Door Leaf thickness = 45mm
2. CRS/Galvanized sheet CRS / Galvanized sheet / Hot Dipped Electro galvanized or Galvalume
 - a. Sheet thickness of door = 1.2 mm
 - b. Sheet thickness of frame (Non Rated) = 1.5 mm
 - c. Sheet thickness of frame (Fire Rated) = 2.0 mm
 - d. Powder Coated Paint

HARDWARE

- Single Point Lock and latches – Mortise Type
- Two and three Point Lock and latches – Mortise Type (Surface mounted) (two-point latches for the inactive door)
- Electrically controlled single point lock and latches
- Auxiliary electromagnetic lock
- Fire Exit Rim Type
- Fire Exit Mortise Type
- Manual/Automatic/Self Latching Surface and Flush bolts For inactive door leaf in pair conditions only
- Panic hardware
- Hinges
- Louvers (Applicable for ceramic fiber only)
- Vision lite
- Swinging fire door closer (surface mounted products or spring hinges)
- Fire door operator with automatic closer (Surface mounted)
- Combination fire door closer and holders (Surface mounted)
- Fire door operator
- Door viewer

