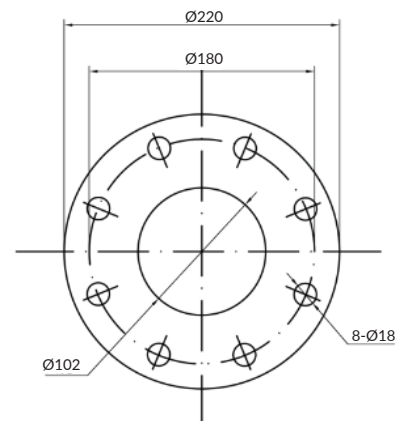
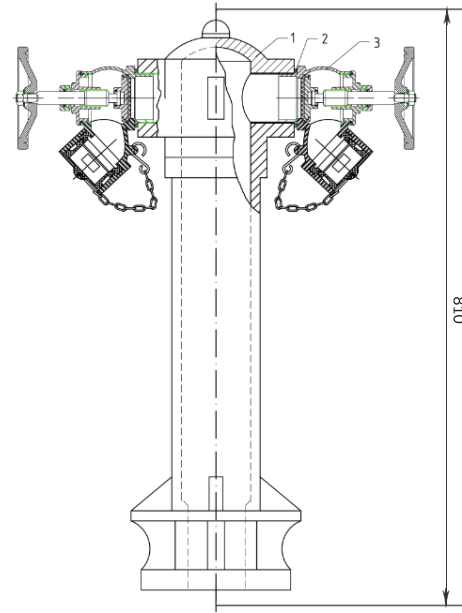




Dimension Detail



Description

2 Way Pillar Hydrant with Landing valve is a component by which firefighters can tap into a water supply. It is used for water supply to fire trucks or directly connected to water hoses and nozzles for fire fighting. It is a special facility for outdoor fire water supply. Its upper part is exposed to the ground for easy recognition.

Main Features

- Easy to Install and Maintain
- For Private & Public Use
- Long Service Time

Structure

The 2 way pillar hydrant is mainly composed of the hydrant body, the sealing gasket and 2 oblique landing valve. The material for each parts are as follows:

Hydrant BodyCast Iron
Sealing GasketNBR
Landing ValveCopper Alloy

Other Detail

1	Hydrant Body
2	Sealing Gasket
3	Landing Valve

Technical Data

Model	LF-WH-100	LF-WH-150
Working Pressure	1.6 Mpa	1.6 Mpa
Testing Pressure	2.4 Mpa	2.4 Mpa
Inlet	4" FF Flange	6" FF Flange
Outlet	2.5 BS336 Oblique	2.5 BS336 Oblique
Height	810mm	810mm
Main Material	Cast Iron	Cast Iron
Surface Treatment	Red Coated(RAL3000)	Red Coated(RAL3000)