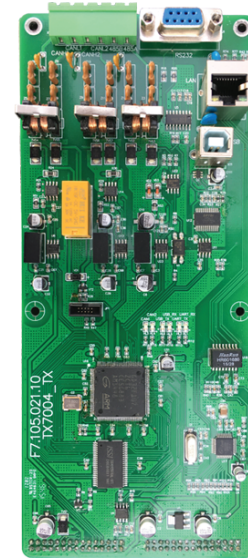


## Feature and Benefits

- Multiple communication protocol in one card.
- Support USB, Ethernet, Can bus and Serial ports.
- Optional Card to be added on the panel as required
- Compatible with LF-X500 control panel
- Transmission path is fully monitored
- No Card positioning and addressing required
- Plug-in terminals, field wiring terminals are removable
- Easy to install



## Overview

The LF-NC5004 is multiple communication protocols such as a USB, Ethernet, Can Bus, RS485/RS232 on a single card intended to use in LF-X500 series control and indicating equipment. These four protocols synchronously working separately, the USB port is used for programming the control panel by uploading the data base from the laptop and for interfacing the Graphic Monitor Center (LF-5812) server and client machine, while the CAN Bus signal is for the networking that can support up to 512 control panel in one ring. The Ethernet port is used for IP networking if required. The RS485/RS232 is used for interfacing third party system such as building management system.

The LF-NC5004 support the pathway requirement on the use of non-life safety networks and Ethernet when interconnecting life safety networking. The transmission path of the Can bus is fully monitored such as in the case of a short or open circuit fault and fault is reported to the control panel. The LF-NC5004 card is panel mount type that can be installed in any available loop port or communication port, the control panel will automatically assign the loop number when powered-on.

## Technical Specification

### Protocol

USB	Interface for Programming software and LF-5812 GMC
Ethernet	Optional TCP/IP Network
CanBus	Network interface that monitor and control up to 512 control panels
Serial	RS 232/485 for other third-party system (Optional Modbus RTU)

### Power Rating Cable

USB:	15meters USB cable
Can Bus:	3Km Max at 2 x 1.50 mm <sup>2</sup> solid core fire resistance
RS232 Serial:	15 meters
RS485 Serial:	1000 meters

### Operating Environment

Temperature	-10°C~+55°C
Relative Humidity	≤95%, non-condensing

## Ordering Information

<b>LF-NC5004</b>	Communication Card for Class A CAN Bus networkable, and RS485/RS232/USB/Ethernet port.
<b>LF-NC5004-Modbus</b>	Communication Card for Class A CAN Bus networkable, and RS485/RS232/USB/Ethernet port. Support Modbus RTU signal output.
<b>LF-NC5004-IP</b>	Communication Card for Class A CAN Bus networkable, and RS485/RS232/USB/Ethernet port. Support TCP/IP Networking