

EQUIPMENT PARTICULARS

NAME OF THE EQUIPMENT : PREACTION CABINET
 MODEL : PRE-PACK
 APPROVAL : UL LISTED
 SIZE : 50,80,100,150 & 200NB

DESIGN PARTICULARS

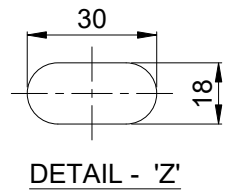
MAX. RATED PRESSURE : 17.5 KG/SQ.CM. (250PSI)

PAINTING

FINISH : FIRE RED TO RAL3001

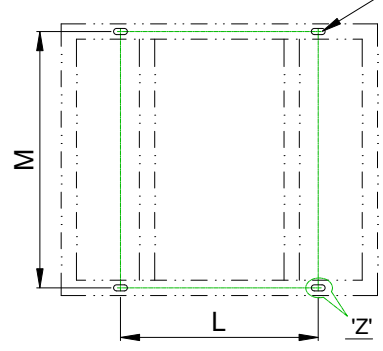
MARKING ON EQUIPMENT

: MFG. TRADE NAME, SERIAL NO., SIZE & MODEL 'UL' LISTED MARK



DETAIL - 'Z'

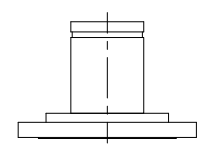
FOUNDATION DETAILS



VIEW - 'X'

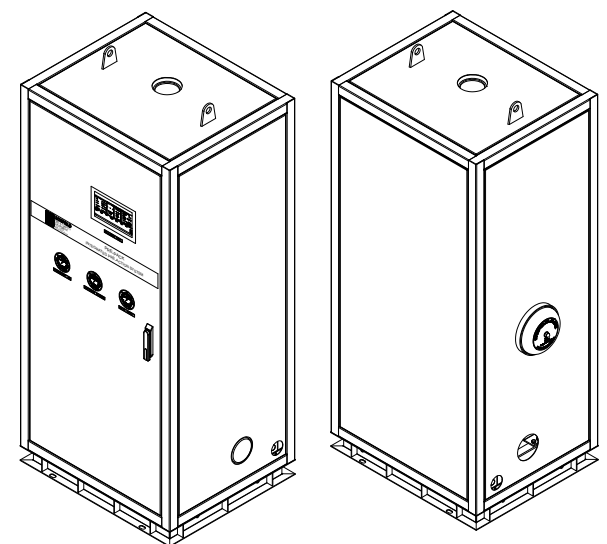
SLOTS - 4 NOS FOR FOUNDATION BOLTS

OPTIONAL FLANGE END CONNECTION



SPOOL PIECE PROVIDED WHEN FLANGE END CONNECTION (LOOSE SUPPLY), MTL. - C.S. & QTY.- 2 NOS.

SR.NO.	DESCRIPTION	SPECIFICATION
12	CABINET	C.S. FINISH RAL 3001
11	AIR COMPRESSOR	GENERAL AIR PROCT
10	DV RELEASING PANEL	HAWK Releasing Panels SUF/M panel -red 230v Model LF1810-13 UL/FM
09	SOLENOID VALVE-2 WAY	24V DC, WP, PARKER MAKE
08	PRSSURE SWITCH PS-10	POTTER MAKE, WP
07	BUTT WELDED FITTINGS	ASTM A-234 Gr. WPB
06	CHECK VALVE	DUCTILE IRON ASTM A536 (65-45-12)
05	DELUGE VALVE	MODEL-LF-DIPA, SIZE-50,80,100,150 & 200 NB WITH DOUBLE INTERLOCK ELECTRIC/PNEUMATIC TRIM
04	BFV GEAR OPRT. WITH TAMPER SWITCH	D.I., LIFECO MAKE
03	PIPE	ASTM A-106/ASTM A-53 SCH.-40/IS:1239-1
02	GROOVED COUPLING	DUCTILE IRON ASTM A536 (65-45-12)
01	BASE FRAME	CARBON STEEL



DIMENSIONS

SIZE	A	B	C	D	E	F	G	H	J	K	L	M	SYSTEM CAPACITY	COMPRESSOR MODEL NUMBER
200 NB	930	80	465	385	850	476	259	190	340	2275	580	820		
150 NB	930	80	465	385	750	420	215	190	315	2035	580	720		
100 NB	870	90	435	345	730	420	187	185	275	1895	520	700		
80 NB	800	152	400	248	690	407.5	171	185	275	1785	450	660		
50 NB	800	152	400	248	690	407.5	171	185	275	1785	450	660		

ALL DIMENSIONS ARE APPROX AND IN MM. UNLESS OTHERWISE SPECIFIED.

DESIGNED BY: LIFECO	CAD BY: JME	TITLE
DRAWING #: XXXXX	SCALE: AS SHOWN	

	DATE: 29-11-2023	REV. No.: 0
	SIZE: 1	SHT. No.: 1

LIFECO PREACTION SYSTEM, DOUBLE INTERLOCK, ELECTRIC / PNEUMATIC TRIM WITH COMPRESSOR & DV RELEASING PANEL, SIZES:-50,80,100,150 & 200NB